



INSTRUCTION – SWITCH INSTALLATION

Subject: P/N: TU03273
Door Switch (1PB5)

Document No: TN03273

Revision: A

Date: OCT-17-2019

RECORD OF REVISIONS

When revised document changed in its entirety.

REV	DATE	DESCRIPTION	BY	CKD
A	OCT-17-2019	Initial release	DNE	GDO

Current revision approval: _____

1. PURPOSE

This instruction provides guidance for installation of the part number listed above.

2. DESCRIPTION

Standard rear panel mount, momentary action, pushbutton, switch. with steel button for use under hinged plates, paddle levers, or manual operation.

3. RATINGS

Circuit: Single input double output, solder lugs.

Manufacturer P/N: 1PB5.

250 VAC: 5-amps.

30 VDC: 3 amps sea level, 2.5 amps 50,000 ft, 24 amps max. inrush.

MIL-S-8805: Hermetically sealed corrosion resistant, vapor and explosion proof.

Warranty: 3 yrs. (36 mo.) from the date of shipment.

4. INSTALLATION

Wiring and hardware not supplied. Match wire type and gauge with existing door circuit or use AS22759/8, 22 AWG or acceptable alternate refer to manufacturer's standard for inline junctions and/or AC 43.13-1 (as amended) Ch 11 Sec 16.

- Modify installation site as required, refer to Figures 6.1. and 6.2.
- Locate switch, verify adjustment and operation with ohmmeter.
- Connect switch into existing door circuit refer to Figures 6.3. and 6.4.
- Inspect and Check: With all doors latched and aircraft power on verify Master Warning Caution and/or Crew Alerting System (CAS) function per applicable Flight and Maintenance Manuals (FMS and MM).

5. SERVICE

There are no authorized repair procedures for switch, only adjustment or replacement. Test switch and circuit with reference to applicable aircraft MM.

PROPRIETARY DATA

Tanis Aircraft Products proprietary rights are included in the information disclosed herein. The recipient by accepting this document agrees that neither this document nor the information disclosed herein, nor any part thereof will be reproduced or transferred to other documents or used or disclosed to others for manufacturing or for any other purpose except as specifically authorized in writing by Tanis Aircraft Products - 952-224-4425.

6. FIGURES

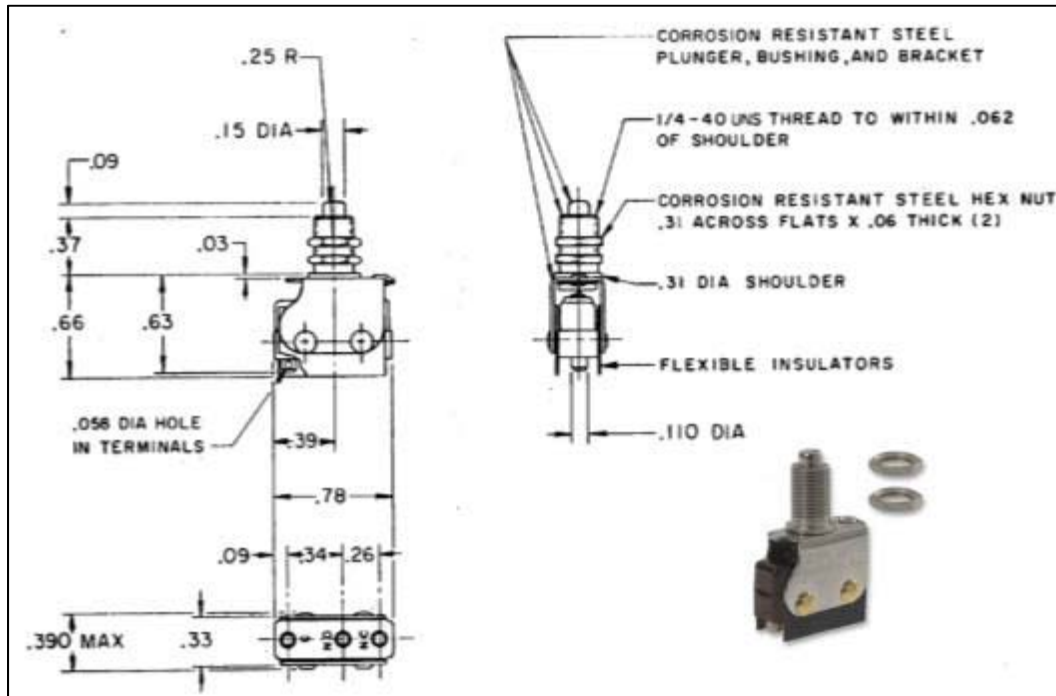


Figure 6.1. TU03273 door switch dimensions (1PB5).

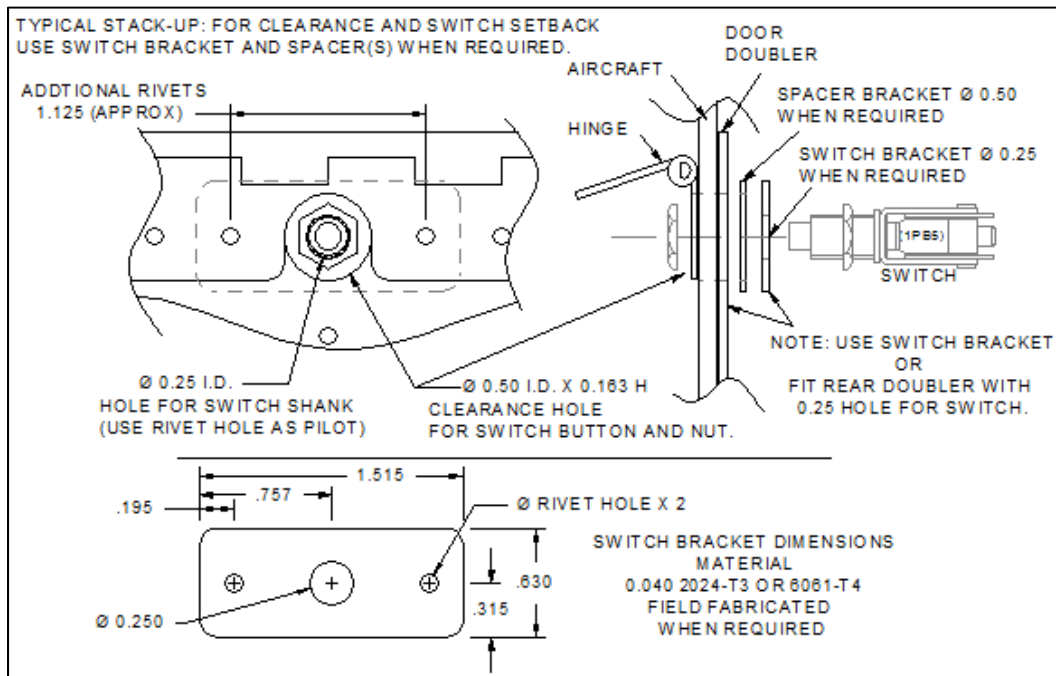


Figure 6.2. Example of stack-up: Before cutting holes check switch clearance and setback. Typical installation uses center hinge rivet hole for pilot adding two rivets one each side of switch. Bracket and/or spacer(s) used as required. Note: clearance hole dimensions for switch button and adjustment nut. Typical composite panel installation does not require bracket, switch located with 0.25-inch hole in rear door doubler.

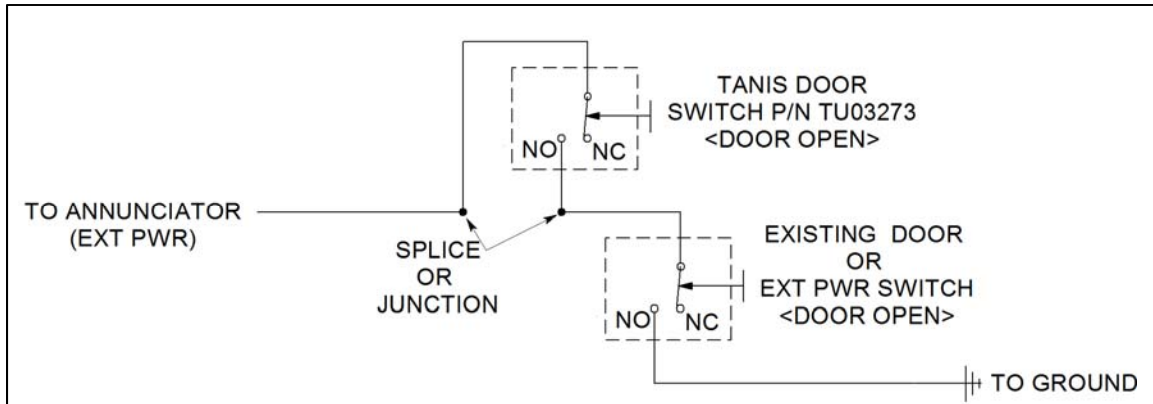


Figure 6.3. Example of Series door switch wire diagram (Normally Open when door open).

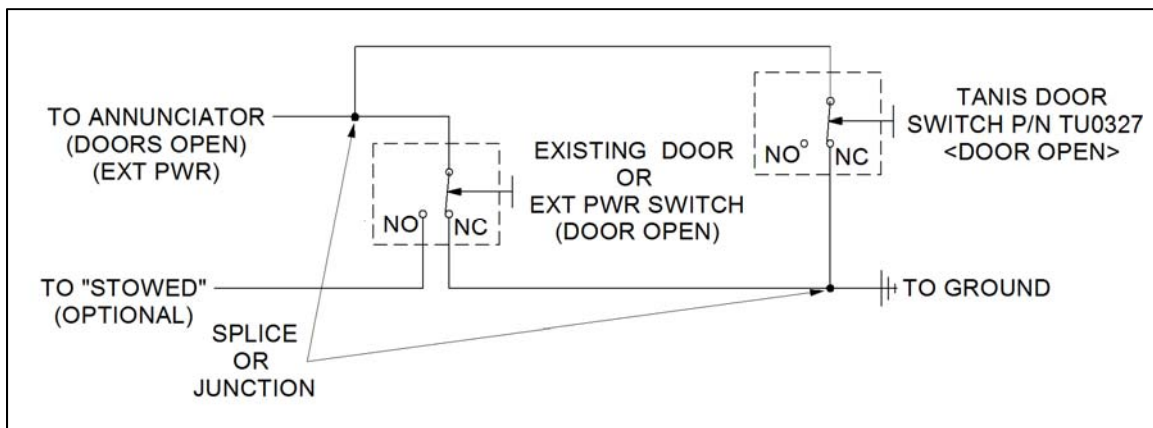


Figure 6.4. Example of Parallel door switch wire diagram (Normally Closed when door open).

***** NOTHING FOLLOWS *****