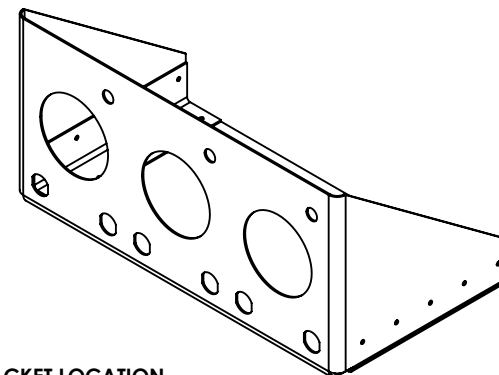
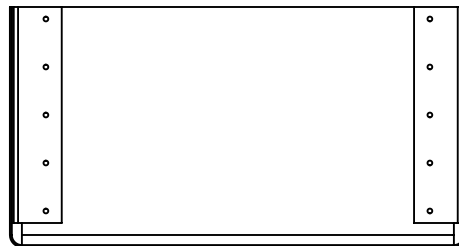
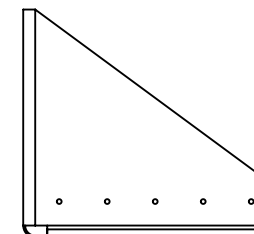
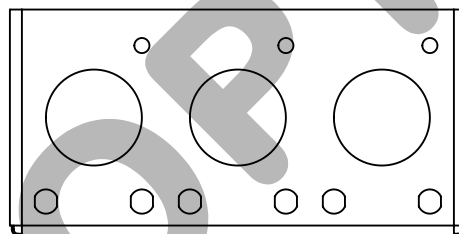


INSTALL NOTES:

1. MATCH DRILL ALL PARTS AND RIVET WITH APPROPRIATE RIVETS. USE MS204470AD4 RIVETS OR EQUIVALENT AS NEEDED.
2. MODIFICATION OF ANY DIMENSIONS OR PARTS AS NEEDED FOR PROPER FIT TO AIRCRAFT IS ALLOWED.
3. INSTALL GROMMET MATERIALS ON HOLES THAT HAVE WIRE PASSING THROUGH.
4. INSTALL PLUGS, CABLE, CIRCUIT PROTECTION, AND INDICATOR LIGHTS WITH REFERENCE TO INDIVIDUAL COMPONENT INSTRUCTIONS FOR OTHER INSTALLS.



3 PLUG BRACKET LOCATION
 STA: 92.0
 WL: 100.0
 BLR: 35.0




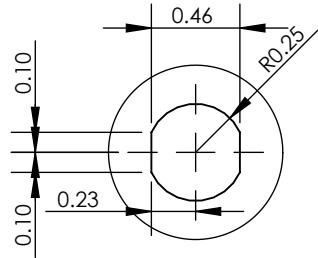
UNLESS OTHERWISE SPECIFIED:

REMOVE BURRS & SHARP EDGES
 DIMENSIONS ARE IN INCHES
 TOLERANCES:
 ANGULAR: MACH $\pm 2^\circ$ BEND $\pm 0.5^\circ$
 TWO PLACE DECIMAL $\pm .030$
 THREE PLACE DECIMAL $\pm .010$

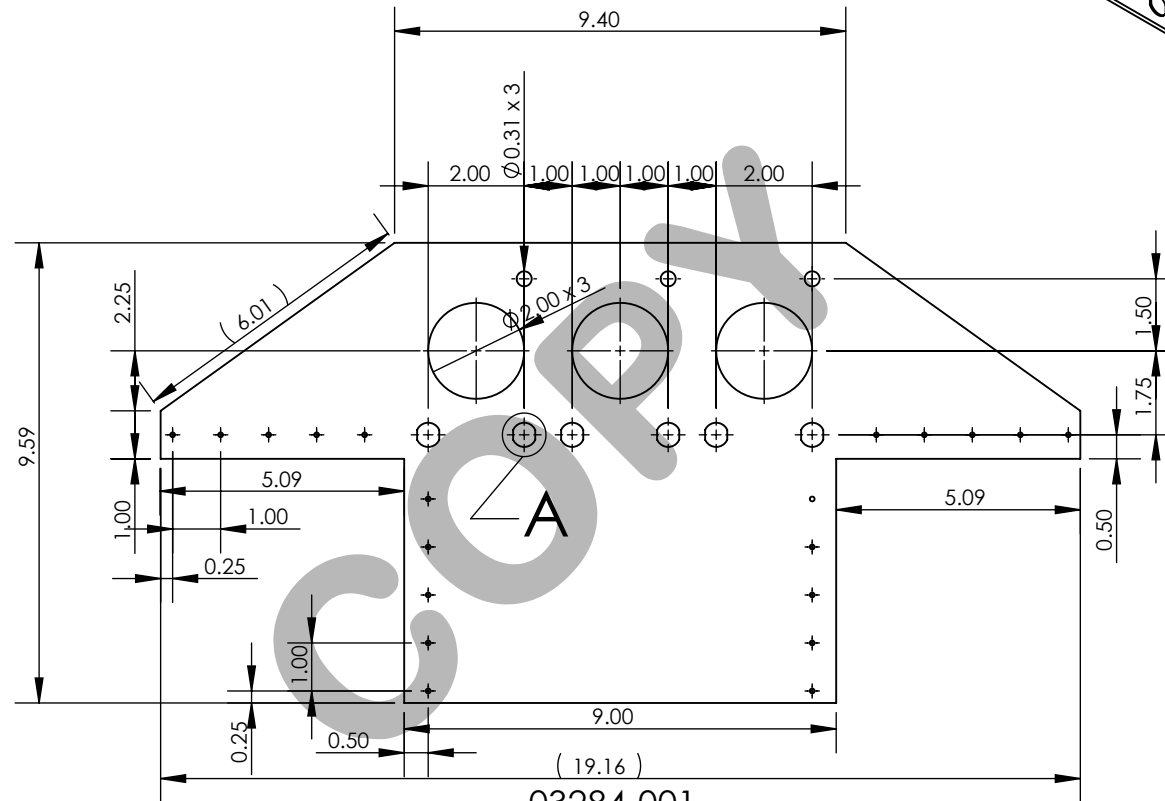
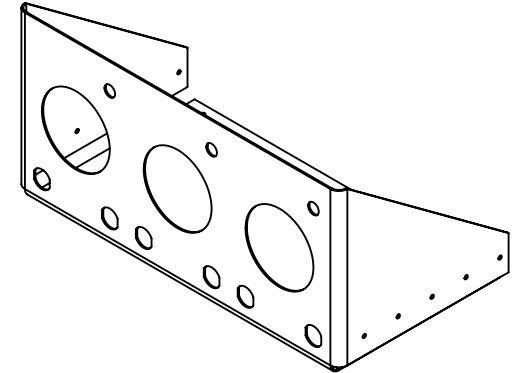
PROPRIETARY AND CONFIDENTIAL

THE INFORMATION CONTAINED IN THIS DRAWING IS THE SOLE PROPERTY OF TANIS AIRCRAFT PRODUCTS. ANY REPRODUCTION IN PART OR AS A WHOLE WITHOUT THE WRITTEN PERMISSION OF TANIS AIRCRAFT PRODUCTS IS PROHIBITED.

2	1,3	03284-002	2	L BRACKET			
1	1,2	03284-001	1	PLUG BRACKET			
ITEM	SHT	PART NUMBER	QTY.	DESCRIPTION		SPECIFICATIONS	
MATERIAL LIST							
CURRENT REV APPROVAL				DRAWN BY	GLEN OLIN	JUL-02-2018	TITLE: BRACKET - 3 PLUG
				CHECKED BY	DIRK ELLIS	JUL-02-2018	
				DO NOT SCALE DRAWING			
B	UPDATES TO BRACKET AND INSTALL		JUL-06-2018	GDO	 TANIS AIRCRAFT PRODUCTS GLENWOOD MUNICIPAL AIRPORT GLENWOOD, MN 56334 USA +1.952.224.4425		SPEC: N/A
A	INITIAL RELEASE		JUL-02-2018	GDO			SUPERCEDES: N/A
REV	CHANGE		DATE	INIT			DRAWING: 03284



DETAIL A
SCALE 1 : 1



03284-001

UNLESS OTHERWISE SPECIFIED:

REMOVE BURRS & SHARP EDGES
DIMENSIONS ARE IN INCHES

TOLERANCES:

ANGULAR: MACH $\pm 2^\circ$ BEND $\pm 0.5^\circ$
TWO PLACE DECIMAL $\pm .030$
THREE PLACE DECIMAL $\pm .010$

FINISH: - CHEM FILM PER MIL-DTL-5541F
- PAINT PER E30043

MATERIAL: 0.050 2024 T3 BARE.
ALTS:
0.050 2024 T3 ALCLAD,
0.050 6061-T6 BARE,
0.040 2024-T4 BARE,
0.040 2024-T4 ALCLAD,
0.040 6061-T6 ALCLAD,

PROPRIETARY AND CONFIDENTIAL

THE INFORMATION CONTAINED IN THIS
DRAWING IS THE SOLE PROPERTY OF
TANIS AIRCRAFT PRODUCTS. ANY
REPRODUCTION IN PART OR AS A WHOLE
WITHOUT THE WRITTEN PERMISSION OF
TANIS AIRCRAFT PRODUCTS IS PROHIBITED.

TITLE:

BRACKET - 3 PLUG

DO NOT SCALE DRAWING

REV B, JUL-06-2018



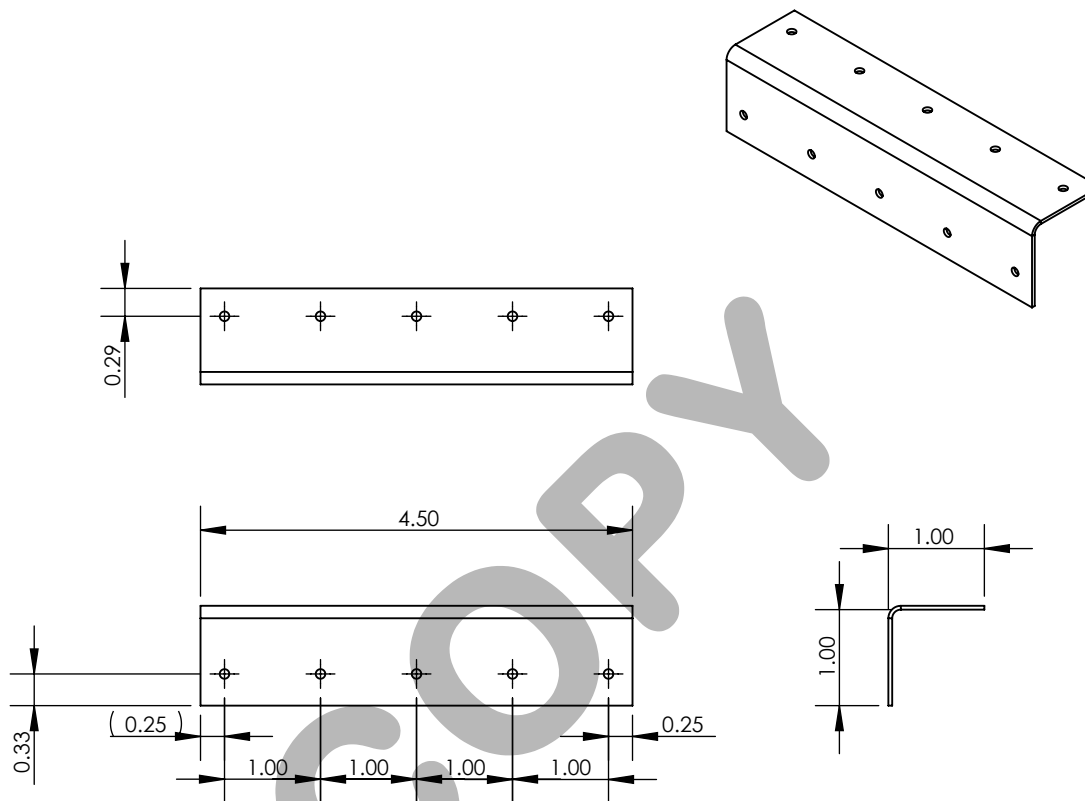
TANIS AIRCRAFT PRODUCTS
GLENWOOD MUNICIPAL AIRPORT
GLENWOOD, MN 56334 USA
+1.952.224.4425

SPEC: N/A

SUPERCEDES: N/A

DRAWING: 03284

SHEET 2 OF 3



03284-002

UNLESS OTHERWISE SPECIFIED:

REMOVE BURRS & SHARP EDGES
DIMENSIONS ARE IN INCHES

TOLERANCES:

ANGULAR: MACH $\pm 2^\circ$ BEND $\pm 0.5^\circ$
TWO PLACE DECIMAL $\pm .030$
THREE PLACE DECIMAL $\pm .010$


FINISH: - CHEM FILM PER MIL-DTL-5541F
- PAINT PER ES0043

MATERIAL: 0.050 2024 T3 BARE.
ALTS:
0.050 2024 T3 ALCLAD,
0.050 6061-T6 BARE,
0.040 2024-T4 BARE,
0.040 2024-T4 ALCLAD,
0.040 6061-T6 ALCLAD,

PROPRIETARY AND CONFIDENTIAL

THE INFORMATION CONTAINED IN THIS
DRAWING IS THE SOLE PROPERTY OF
TANIS AIRCRAFT PRODUCTS. ANY
REPRODUCTION IN PART OR AS A WHOLE
WITHOUT THE WRITTEN PERMISSION OF
TANIS AIRCRAFT PRODUCTS IS PROHIBITED.

TITLE:
BRACKET - 3 PLUG

DO NOT SCALE DRAWING		REV B, JUL-06-2018	
	TANIS AIRCRAFT PRODUCTS GLENWOOD MUNICIPAL AIRPORT GLENWOOD, MN 56334 USA +1.952.224.4425	SPEC: N/A	
		SUPERCEDES: N/A	
		DRAWING: 03284	SHEET 3 OF 3