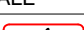


△ NEXT HIGHER ASSEMBLY (NHA)

19	REF	0413-217-1605	2	LOCKING SEALING PLUG	(INSTALLED AT MFG)	
18	REF	0462-201-16141	12	SOCKET CONTACT (SOCKET CONNECTOR CONTACT)	USE AS REQUIRED	12
17	3	VARIES	△1	HEAT ELEMENT	TANIS PART	
16	2	VARIES	△1	BATTERY HEATER	USE AS REQUIRED	
15	2	THP3094-500	△1	AV/CABIN HEATER	TANIS PART - (MAY VARY)	
14	2	VARIES	△1	PLUG - RECEPTACLE (OUTLET)	TANIS PART - (NEMA 5-15R)	
13	2	03105-A	1	THERMAL CONTROL CABLE - SINGLE	TANIS PART (PER THIS DRAWING)	
12	2	TLP3046-05	1	THERMAL CONTROL (ON 5C°)	TANIS PART	
11	2	DT04-2P-C017	3	SEALING CAP - SOCKET CONNECTOR	GREY	3
10	2-3	TCP2598	3	PIN CONNECTOR KIT - 2 CONTACT	TANIS PART (PIN CONTACT 0460-202-16141)	1
9	2-3	TCS2598	20	SOCKET CONNECTOR KIT - 2 CONTACT	TANIS PART (SOCKET CONTACT 0462-201-16141)	1
8	3	TCJ3012	2	JUNCTION KIT - 6 LEAD	TANIS PART	
7	2-3	TCJ3008	2	JUNCTION KIT - 4 LEAD	TANIS PART	
6	2-3	22759-182	834	18 GAUGE - 2 CONDUCTOR	TANIS PART - BLK/WHT IN JACKET (LENGTH INCHES)	
5	2	MS25036-150	3	RING TERMINAL - GROUND	0.25 INCH RING - CRIMP TERMINAL	
4	2	22759-181	36	18 GAUGE - 1 CONDUCTOR	TANIS PART - GREEN (LENGTH INCHES)	
3	2	VARIES	3	CPD (CIRCUIT PROTECTION DEVICE)	TANIS PART - (TU03141-B) W/ 12-AMP FUSES	
2	2	VARIES	△1	INDICATOR LIGHT	TANIS PART (TEST WITH POWER)	
1	2	VARIES	△1	PLUG - SHORE POWER (INLET)	TANIS PART - (NEMA 5-15P)	
ITEM	SHT	ITEM NUMBER	QTY	DESCRIPTION	SPECIFICATIONS	MFG

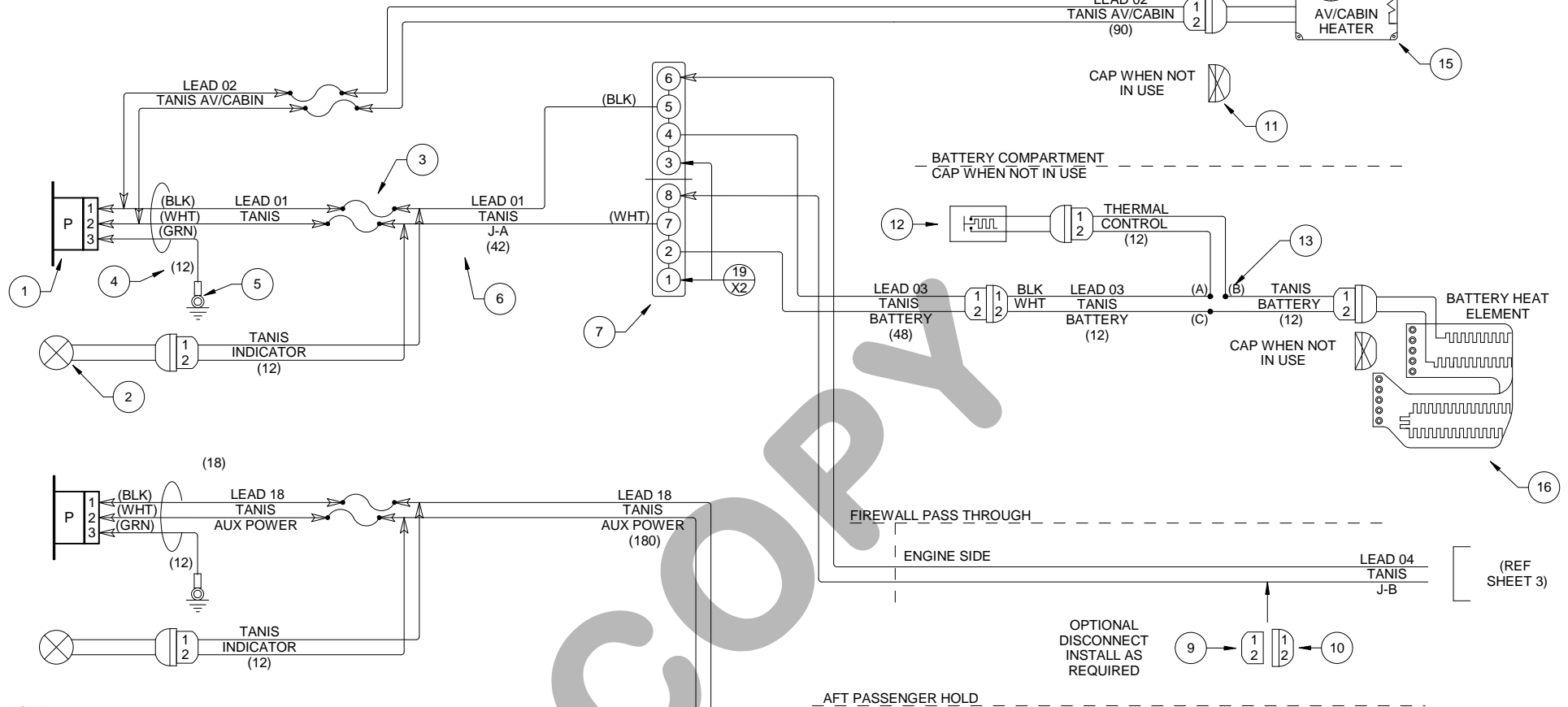
MATERIAL LIST

(.vc6 TC2 format F)

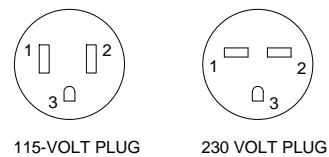
CURRENT REV APPROVAL:				DRAWN BY	GLEN OLIN	DEC-04-2015	TITLE:	
				CHECKED BY	DIRK ELLIS	DEC-04-2015	CABLE KIT	
C	SEGREGATE LEAD 02 WITH DEDICATED CPD	OCT-20-2016	DNE	SCALE	NOT TO SCALE		P/N: TCF3121	
B	INSTALLATION REVISION	FEB-16-2016	DNE		<b>TANIS AIRCRAFT PRODUCTS</b> GLENWOOD MUNICIPAL AIRPORT GLENWOOD, MN 56334 USA +1.952.224.4425		SPEC: 90000	
A	INITIAL RELEASE	DEC-04-2015	GDO				SUPERSEDES: N/A	
REV	CHANGE	DATE	INIT				DRAWING: 03121	

THE INFORMATION CONTAINED IN THIS DOCUMENT AND ALL OTHER ASSOCIATED DOCUMENTS IS PROPRIETARY TO TANIS AIRCRAFT PRODUCTS AND WILL NOT BE REPRODUCED DISCLOSED IN WHOLE OR IN PART OR USED FOR ANY DESIGN OR MANUFACTURE EXCEPT WITH DIRECT WRITTEN AUTHORIZATION FROM TANIS AIRCRAFT PRODUCTS.

LEFT QUARTER PANEL PILOT SIDE  
AFT OF FIREWALL



NOTE 1:  
1. TERMINATE ARROWED WIRES AS INDICATED.  
2. ACCEPTABLE TO CUT, TERMINATE AND/OR RE TERMINATE.  
3. INSTALL SEALING CAP ON LEADS NOT IN USE.  
4. CIRCUIT PROTECTION NOT TO EXCEED 12 AMPS.  
5. WIRING IN PARALLEL.  
6. NEC/NEMA COLOR CODE.



#### SHORE POWER PLUG CONFIGURATION

1. "BLK" TO BRASS OR BLACK SCREW.
2. "WHT" TO SILVER SCREW.
3. "GRN" TO GREEN GROUND SCREW.

#### MANUFACTURING (MFG):

1. LABELS PER DRAWING.
2. CABLE TIE LABEL AND GROUND ON UN-TERMINATED LEAD 01.
3. INSTALL JUNCTION KIT SEALING PLUGS AS INDICATED.
4. MATERIAL LIST MFG COLUMN - PKG FOR FIELD USE.



**TANIS AIRCRAFT PRODUCTS**  
GLENWOOD MUNICIPAL AIRPORT  
GLENWOOD, MN 56334 USA

TITLE: CABLE KIT

WIRE DIAGRAM

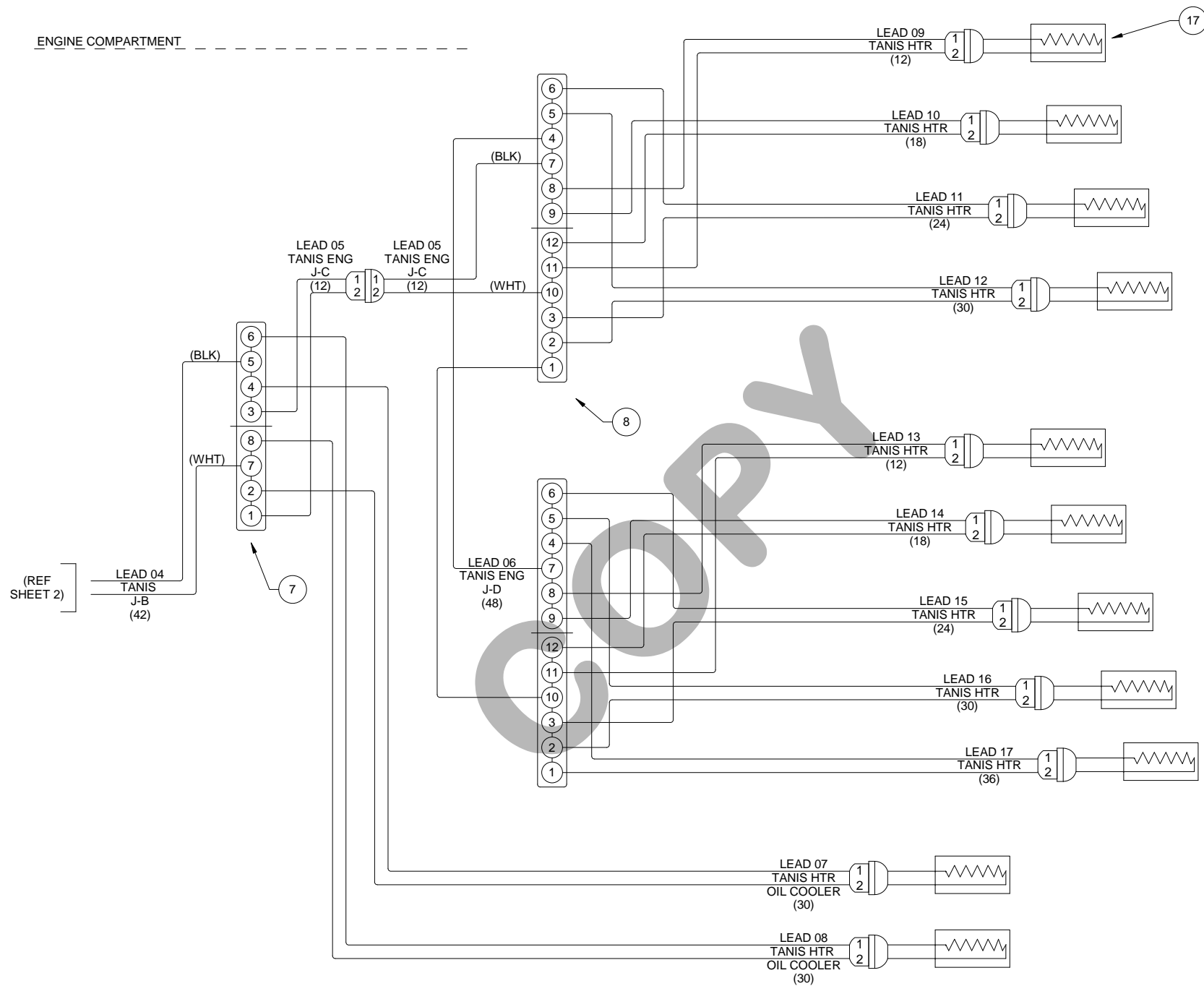
REV. C

DRAWING: 03121

DATE: OCT-20-2016

SHEET: 2 OF 3

ENGINE COMPARTMENT



**TANIS AIRCRAFT PRODUCTS**  
GLENWOOD MUNICIPAL AIRPORT  
GLENWOOD, MN 56334 USA

TITLE: CABLE KIT

WIRE DIAGRAM

REV. C

DRAWING: 03121

DATE: OCT-20-2016

SHEET: 3 OF 3