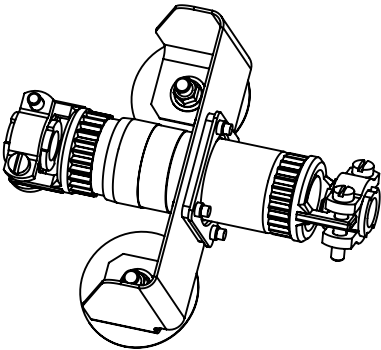
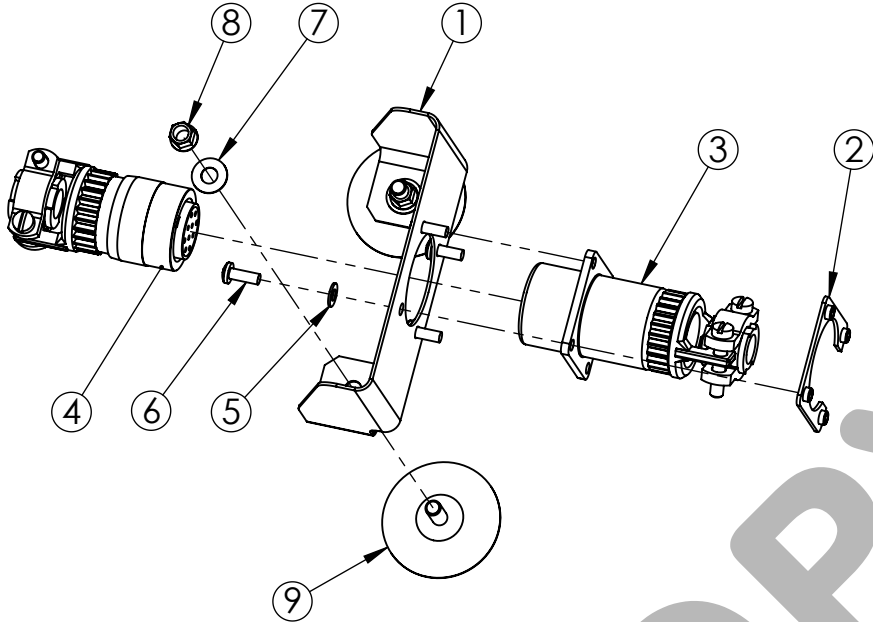



KIT NUMBER: TU02968



UNLESS OTHERWISE SPECIFIED:
REMOVE BURRS & SHARP EDGES
DIMENSIONS ARE IN INCHES
TOLERANCES:
ANGULAR: MACH ±2°
TWO PLACE DECIMAL ±.010"
THREE PLACE DECIMAL ±.005"

PROPRIETARY AND CONFIDENTIAL

THE INFORMATION CONTAINED IN THIS
DRAWING IS THE SOLE PROPERTY OF
TANIS AIRCRAFT PRODUCTS. ANY
REPRODUCTION IN PART OR AS A WHOLE
WITHOUT THE WRITTEN PERMISSION OF
TANIS AIRCRAFT PRODUCTS IS PROHIBITED.

9	1	CB4000E08CRA8	2	STUD, ADHESIVE BONDED	ALT: ANY LONGER STUD, 8-32 THREAD		
8	1	MS21042-08	2	NUT	SELF LOCKING 8-32		
7	1	NAS1149FN816P	2	WASHER	ALTS: NAS1149DN816J, NAS1149FN816J		
6	1	MS35206-214	4	SCREW, PAN HEAD	4-40 X .313		
5	1	NAS1149FN416P	4	WASHER			
4	1	MS3126F14-5PX	1	STRAIGHT PLUG			
3	1	MS3120F14-5SX	1	RECEPTACLE, WALL MOUNT			
2	1	M85049/95-14A-A	1	3/4 CONNECTOR FLANGE	4-40 THREADS		
1	1	02967	1	BRACKET, CONNECTOR			
ITEM	SHT	PART NUMBER	QTY.	DESCRIPTION	SPECIFICATIONS		
MATERIAL LIST							
CURRENT REV APPROVAL				DRAWN BY	JOHN CICHA	OCT-10-2012	TITLE: BRACKET, CONNECTOR KIT
				CHECKED BY	GLEN OLIN	OCT-04-2012	
				DO NOT SCALE DRAWING			SHORE POWER, 5 PIN
B	ECR 2014-0005		APR-20-2016	GDO	 TANIS AIRCRAFT PRODUCTS GLENWOOD MUNICIPAL AIRPORT GLENWOOD, MN 56334 USA +1.952.224.4425	SPEC: N/A	
A	INITIAL RELEASE		OCT-04-2012	JLC		SUPERCEDES: N/A	
REV	CHANGE		DATE	INIT		DRAWING: 02968	
					SHEET 1 OF 1		