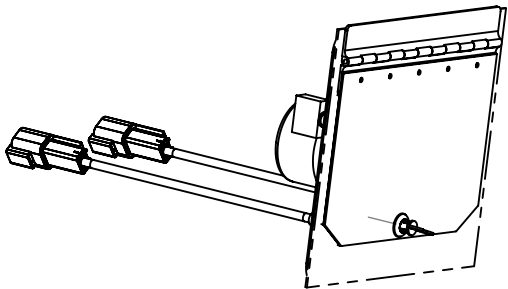


KIT NUMBER TD02959



NOTE: THIS DOOR CAN BE FEILD FABRICATED WITH REFERENCE TO TNG1000 AND 43.13 CHAPTER 4

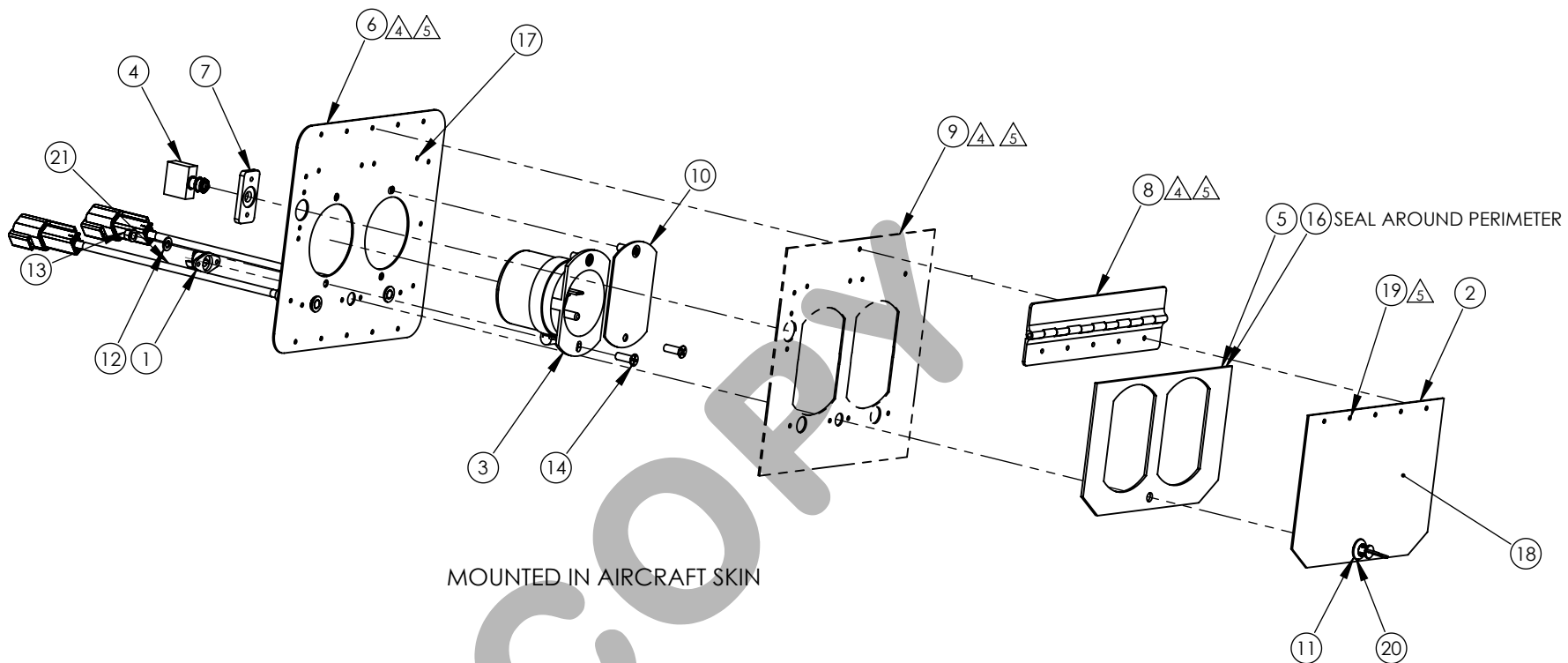
- 7 FABRICATE FROM BULK MATERIAL SUPPLIED
- 6 SEE SHEET 3
- 5 RIVET HOLES TO BE MATCH DRILLED WITH MATING PART TO SUIT
- 4 SEAL MATING SURFACES USING 870-B-2 SEALANT ITEM 16
- 3 EXISTING PART
- 2 MATERIALS SUPPLIED AT NEXT HIGHER ASSEMBLY
- 1 SUPPLIED BY INSTALLER

UNLESS OTHERWISE SPECIFIED:
REMOVE BURRS & SHARP EDGES
DIMENSIONS ARE IN INCHES
TOLERANCES:
ANGULAR: MACH ±2°
TWO PLACE DECIMAL ±.010"
THREE PLACE DECIMAL ±.005"

PROPRIETARY AND CONFIDENTIAL

THE INFORMATION CONTAINED IN THIS DRAWING IS THE SOLE PROPERTY OF TANIS AIRCRAFT PRODUCTS. ANY REPRODUCTION IN PART OR AS A WHOLE WITHOUT THE WRITTEN PERMISSION OF TANIS AIRCRAFT PRODUCTS IS PROHIBITED.

21	2	TLP3039-06-_____	△ ₁	INDICATOR LIGHT	VOLTAGE PER NHA
20	2	2600-LW-7	△ ₁	RETAINING WASHER	CAMLOC
19	2	MS20470AD3	△ ₁	RIVET, SOLID, UNIVERSAL HEAD	
18	2	VARIES	△ ₂	SYSTEM PLACARD	PER INSTALLATION
17	2	MS20426AD3	△ ₁	RIVET, SOLID, COUNTERSUNK, 100 DEG	
16	2	RTV 108	△ ₁	RTV SILICONE	MIL-A 461068
15	2	P/S 870-B-2	△ ₁	SEALANT	PPG AEROSPACE
14	2	MS24694-S5	△ ₁	SCREW, CS'K, 100 DEG, STRUCTURAL	
13	2	MS21042-08	△ ₁	NUT, SELF LOCKING	8-32
12	2	NAS1149FN832P	△ ₁	WASHER, FLAT	
11	2	2600-8SW	△ ₁	STUD ASS'Y, FIXED WING HEAD	CAMLOC
10	2	02982	△ ₃	COVER PLATE	.040 2024-T3
9	3		△ ₂	AIRCRAFT SKIN	MODIFY TO SUIT
8	2	02960	△ ₁	HINGE	MODIFY TO SUIT
7	2	02981	△ ₁	SPACER	
6	2	02958	△ ₁	DOUBLER	
5	2	02977	△ ₁	SEAL, SILICONE	
4	2	1PB5	△ ₁	SWITCH	
3	2	02839	△ ₂	PLUG, FLUSH MOUNT	
2	2	02975	△ ₁	DOOR	
1	2	212-12S	△ ₁	RECEPTACLE, TYPE 1, CAST	CAMLOC
ITEM	SHT	PART NUMBER	QTY	DESCRIPTION	SPECIFICATIONS
MATERIAL LIST					
SW FORMAT REV A					
CURRENT REV APPROVAL				DRAWN BY	JOHN CICHA
				CHECKED BY	GLEN OLIN
				DO NOT SCALE DRAWING	
B	UPDATE FOR TLP3039		SEP-14-2018	GDO	TITLE: SHORE POWER KIT
A	INITIAL RELEASE		OCT-19-2012	JLC	
REV	CHANGE		DATE	INIT	
					TANIS AIRCRAFT PRODUCTS GLENWOOD MUNICIPAL AIRPORT GLENWOOD, MN 56334 USA +1.952.224.4425
					SPEC: N/A
					SUPERCEDES: N/A
					DRAWING: 02959
					SHEET 1 OF 3



DO NOT SCALE DRAWING
TANIS AIRCRAFT PRODUCTS
 GLENWOOD MUNICIPAL AIRPORT
 GLENWOOD, MN 56334 USA
 +1.952.224.4425

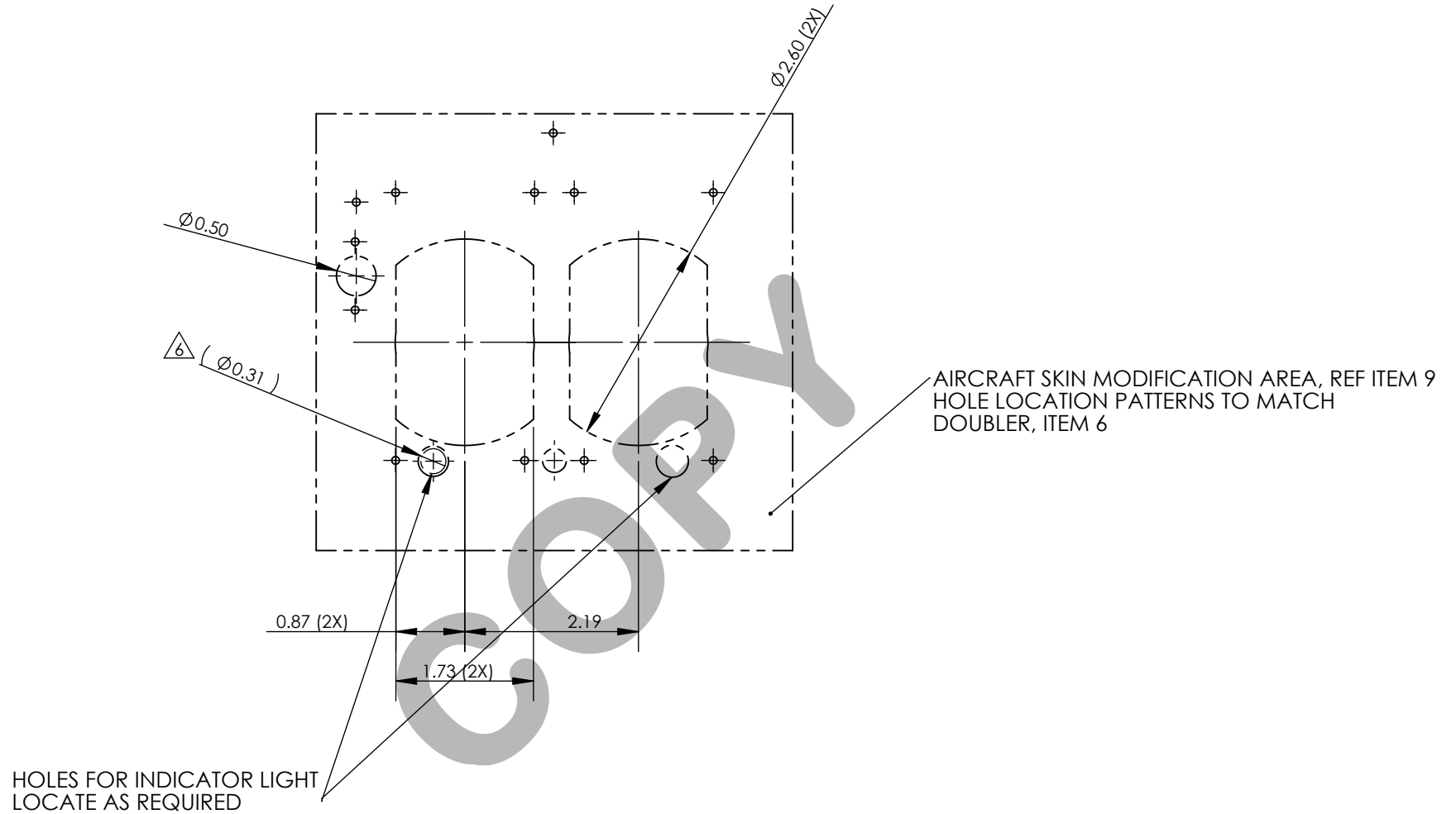
**TITLE: SHORE POWER KIT
 DH6 2 STATION**

SPEC: N/A

REV B

DWG. NO. 02959

SHEET 2 OF 3



△ IF FLUSH MOUNT IS DESIRED FOR INDICATOR LIGHT,
USE Ø8MM HOLE IN DOUBLER AND Ø8.2MM OR LARGER IN AIRCRAFT SKIN



DO NOT SCALE DRAWING

TANIS AIRCRAFT PRODUCTS
GLENWOOD MUNICIPAL AIRPORT
GLENWOOD, MN 56334 USA
+1.952.224.4425

**TITLE: SHORE POWER KIT
DH6 2 STATION**

SPEC: N/A	REV B
DWG. NO. 02959	SHEET 3 OF 3