

## NOTES


- 1 CABLE KIT USED WITH 115 AND 230-VOLT KITS. INSTALLED WITH REFERENCE TO PREHEAT INSTRUCTION TNF2955.
  - A. POWER LEAD AND GROUND PINOUT DEPICTED IN SHORE POWER PLUG CONFIGURATION SHEET 2.
  - B. TERMINATE ARROWED WIRES AS INDICATED.
  - C. WIRES MAY BE CUT AND RE-TERMINATED (SPARE SOCKET CONTACTS SUPPLIED).
  - D. CIRCUIT PROTECTION DEVICE (CPD) NOT TO EXCEED 12 AMPS.
  - E. CIRCUIT LOAD NOT TO EXCEED 80% OF CPD AMPERAGE RATING.
  - F. WIRING IN PARALLEL, NEC/NEMA COLOR CODE.
- 2 SUPPLIED THROUGH NEXT HIGHER ASSEMBLY (NHA) PREHEAT KIT TOP LEVEL DRAWING (PLUG, CPD, ELEMENTS, ETC.).
- 3 PARTS SUPPLIED IN BULK.
- 4 PARTS SUPPLIED PARTIALLY ASSEMBLED.
- 5 BATTERY PLUG: LOCATE ON UPPER BATTERY SHELF WITH CUSHIONED CLAMPS FORWARD OF STANDBY BATTERY OR ALTERNATE LOCATION TBD INSTALLING AUTHORITY.
- 6 ENGINE PLUG: ONE PER ENGINE, LOCATE ON LEFT LOWER AFT ENGINE STRUT, ASSEMBLE PER DRAWING 02983, SECURE PLUG, CPD, AND INDICATOR LIGHT, TO MOUNTING PLATE WITH APPROPRIATELY SIZED CUSHIONED CLAMPS AND ROUTE JUNCTION LEAD THROUGH FIREWALL WITH EXISTING WIRING TO DISCONNECT OR ALTERNATE LOCATION TBD INSTALLING AUTHORITY.
- 7 LOCATE THERMAL CONTROL 6 TO 18 INCHES / 15 TO 45 CM FROM ELEMENT (AMBIENT AIR SENSOR CIRCUIT CLOSED BELOW FREEZING OPEN ABOVE) LEADS MAY BE CUT AND RE TERMINATED PER INSTALLATION.
- 8 CORRESPONDING RECEPTACLE PLUG ADAPTOR (OUTLET) SUPPLIED WITH 230 VOLT KIT THROUGH NHA AND WIRED ON EXTENSION CORDS PROVIDED BY OPERATOR (INSTRUCTION TN02829).
- 9 BEFORE CONNECTING TO POWER COMPLETE FUNCTIONAL SYSTEM CHECK WITH OHMMETER, REFER TO PREHEAT INSTRUCTION TNF2955 AND TNG1000.

14	1	LABEL PACK	1 BAG	LABELS PER DRAWING	TANIS - USE AS REQUIRED
13	REF	0460-202-16141	6	PIN CONTACT - SOLID CRIMP TYPE	TE - SPARES USE AS REQUIRED
12	REF	0462-201-16141	30	SOCKET CONTACT - SOLID CRIMP TYPE	TE - SPARES USE AS REQUIRED
11	3	TCS2598	2	SOCKET CONNECTOR KIT - 2 CONTACT	TANIS - (SOCKET CONTACT 0462-201-16141)
10	2	TL03217-D	1	THERMAL CONTROL CABLE - DUAL BATTERY	TANIS
9	2	TL03217-C	1	THERMAL CONTROL CABLE - SINGLE BATTERY	TANIS
BULK MATERIAL LIST					

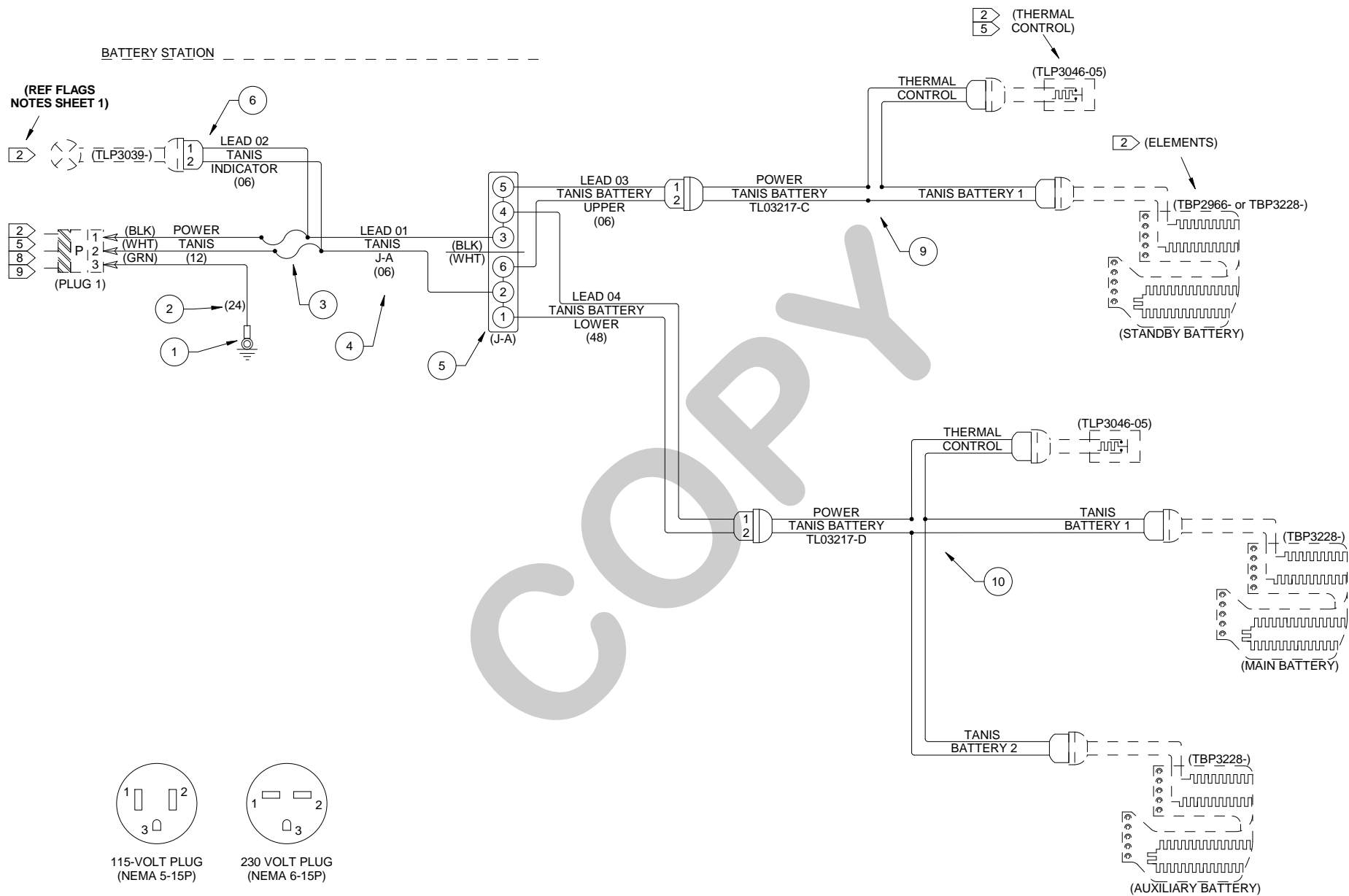
8	3	TCJ3012	2	JUNCTION KIT - 6 LEAD	TANIS - (SOCKET CONTACT 0462-201-16141)
7	3	TCP2598	2	PIN CONNECTOR KIT - 2 CONTACT	TANIS - (PIN CONTACT 0460-202-16141)
6	2-3	TCS2598	5	SOCKET CONNECTOR KIT - 2 CONTACT	TANIS - (SOCKET CONTACT 0462-201-16141)
5	2	TCJ3106	1	JUNCTION KIT - 3 LEAD	TANIS - (SOCKET CONTACT 0462-201-16141)
4	2-3	22759-182	366	18 GAUGE - 2 CONDUCTOR	TANIS - WHT/BLK RED JACKET (LENGTH INCHES)
3	2-3	(N/A)	3	MFG ASSEMBLY PER DWG 03013 DETAIL B	TANIS - CPD - FUSED LINK SPARE LEAD W/TU02848 FUSES 12A
2	2-3	22759-181	72	18 GAUGE - 1 CONDUCTOR	TANIS - GREEN (LENGTH INCHES)
1	2-3	MS25036-103	3	RING TERMINAL - GROUND	MS - #10 RING - CRIMP TERMINAL
ITEM	SHT	PART NUMBER	QTY	DESCRIPTION	MATERIAL / SPECIFICATIONS

### MATERIAL LIST

(.vc6 TC format H)

CURRENT REV APPROVAL:				DRAWN BY	GLEN OLIN	OCT-03-2012	TITLE: CABLE KIT
D	ELEMENT CALLOUTS FOR 230V KIT AND THERMAL CONTROL CABLE P/N	AUG-20-2019	DNE	CHECKED BY	DIRK ELLIS	OCT-03-2012	
C	CONFIGURE WITH BATTERY, CPD AND CONTROLLER CIRCUITS, 3105 AND 3013	NOV-27-2018	DNE	SCALE	NOT TO SCALE		P/N: TCF2956 (02955)
B	STANDARDIZE CONNECTORS	SEP-15-2014	DNE	 <b>TANIS AIRCRAFT PRODUCTS</b> GLENWOOD MUNICIPAL AIRPORT GLENWOOD, MN 56334 USA +1.952.224.4425	SPEC: 90000		
A	INITIAL RELEASE	OCT-03-2012	GDO		SUPERSEDES: N/A		
REV.	CHANGE	DATE	INIT		DRAWING: 02956 SHEET: 1 OF 3		

INFORMATION CONTAINED IN THIS DOCUMENT AND ALL OTHER ASSOCIATED DOCUMENTS IS PROPRIETARY AND ARE NOT TO BE REPRODUCED OR DISCLOSED IN WHOLE OR IN PART OR USED FOR ANY DESIGN OR MANUFACTURE WITHOUT DIRECT WRITTEN AUTHORIZATION FROM TANIS AIRCRAFT PRODUCTS.



**SHORE POWER PLUG CONFIGURATION:**

1. "BLK" TO BRASS OR BLACK SCREW.
2. "WHT" TO SILVER SCREW.
3. "GRN" TO GREEN GROUND SCREW.



**TANIS AIRCRAFT PRODUCTS**  
GLENWOOD MUNICIPAL AIRPORT  
GLENWOOD, MN 56334 USA

TITLE: CABLE KIT

REV. D

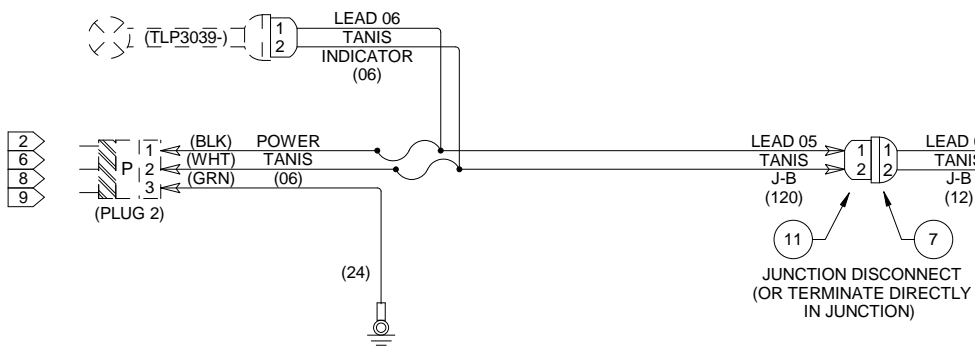
DATE: AUG-20-2019

WIRE DIAGRAM

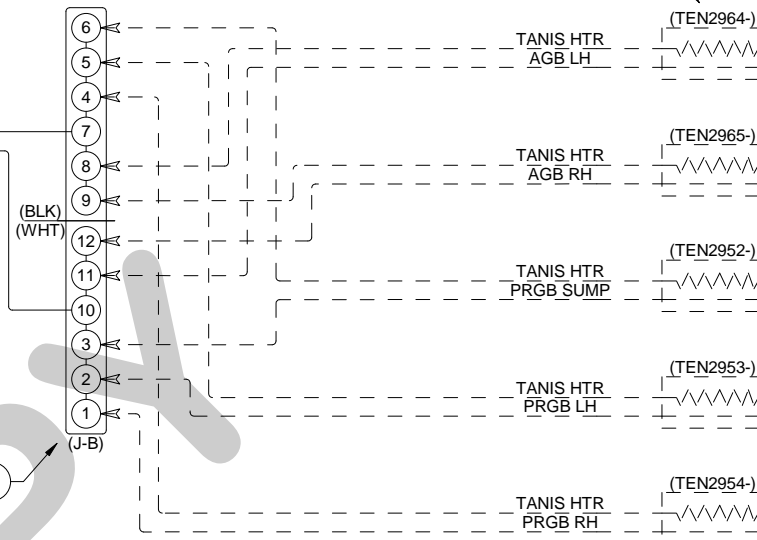
DRAWING: 02956

SHEET: 2 OF 3

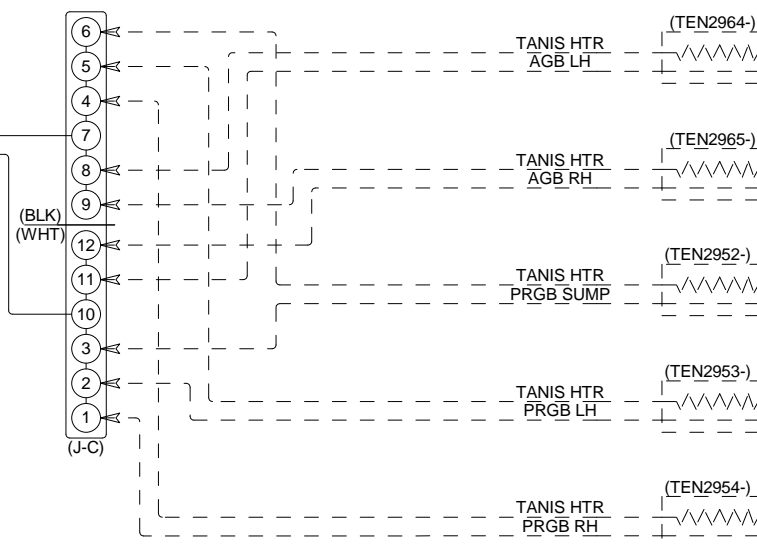
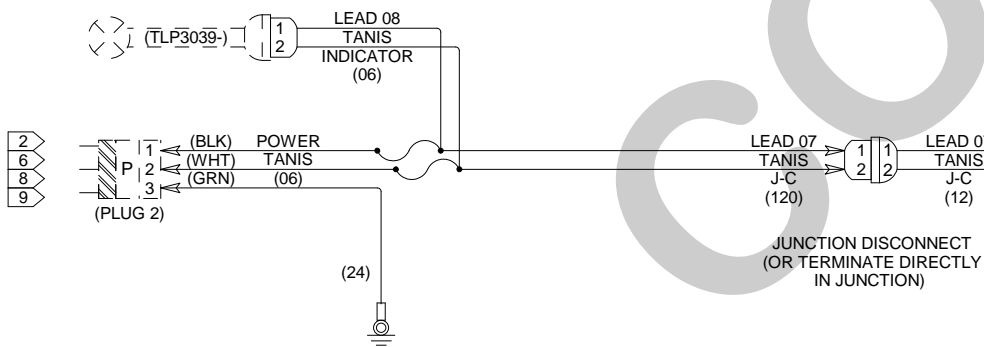
LEFT ENGINE



2 115 VOLT KIT USES DIFFERENT AGB ELEMENTS REFER TO TOP LEVEL DRAWING 02955-115 AND INSTALLATION INSTRUCTION TNF2955.



RIGHT ENGINE



**TANIS AIRCRAFT PRODUCTS**  
GLENWOOD MUNICIPAL AIRPORT  
GLENWOOD, MN 56334 USA

TITLE: CABLE KIT

REV. D

DATE: AUG-20-2019

WIRE DIAGRAM

DRAWING: 02956

SHEET: 3 OF 3