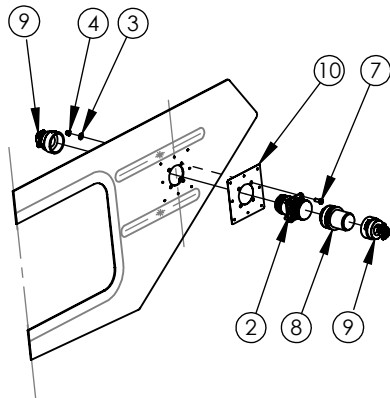
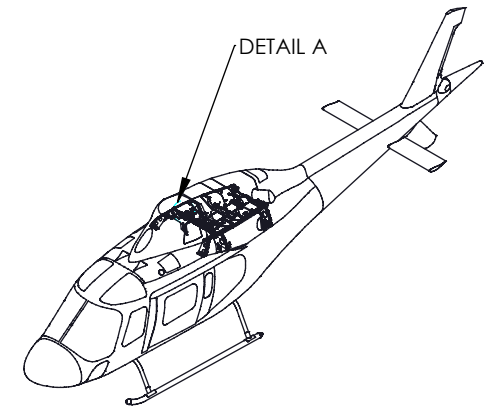
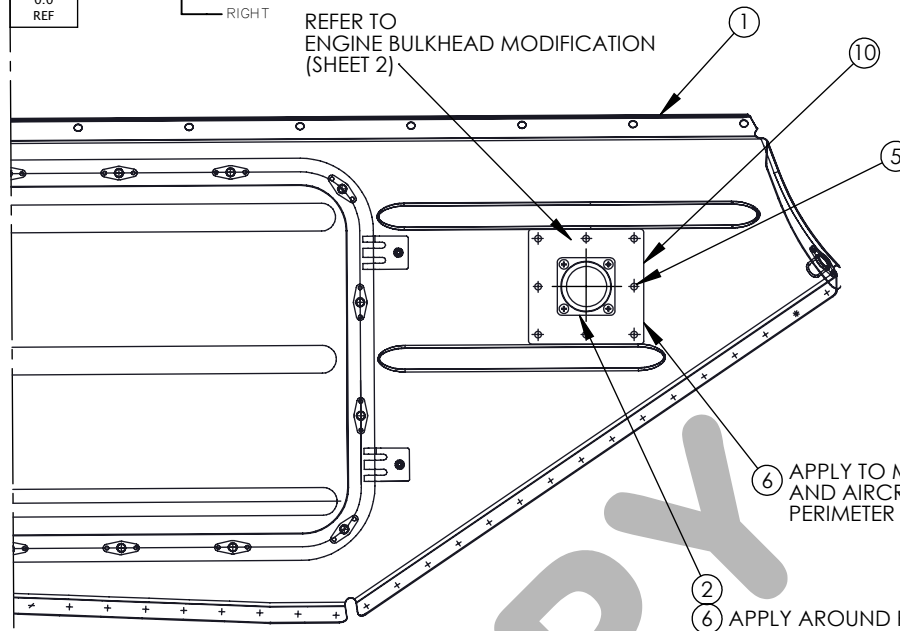


TU02929

B.L.
0.0
REFUP
RIGHTREFER TO
ENGINE BULKHEAD MODIFICATION
(SHEET 2)

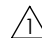
DETAIL A

APPLY TO MATING SURFACES OF ITEM 10
AND AIRCRAFT BULKHEAD AND ALL AROUND
PERIMETER

APPLY AROUND PERIMETER

DETAIL A

LOOKING DOWN AT RIGHT SIDE OF ENGINE BULKHEAD

 SUPPLIED BY INSTALLER

UNLESS OTHERWISE SPECIFIED:


REMOVE BURRS & SHARP EDGES
DIMENSIONS ARE IN INCHES
TOLERANCES:
ANGULAR: BEND $\pm 0.5^\circ$
TWO PLACE DECIMAL $\pm .030$ "
THREE PLACE DECIMAL $\pm .010$ "

PROPRIETARY AND CONFIDENTIAL

THE INFORMATION CONTAINED IN THIS
DRAWING IS THE SOLE PROPERTY OF
TANIS AIRCRAFT PRODUCTS. ANY
REPRODUCTION IN PART OR AS A WHOLE
WITHOUT THE WRITTEN PERMISSION OF
TANIS AIRCRAFT PRODUCTS IS PROHIBITED.

10	1,3	02929-1	1	MOUNTING PLATE	
9	1	M85049-52S 20W	2	BACKSHELL	STRAIN RELIEF
8	1	MS3456KT20-27P	1	STRAIGHT PLUG	PIN CONNECTORS
7	1	MS27039-0807	4	SCREW	8-32 X .469
6	1	P/S 700	1	SEALANT	PPG AEROSPACE
5	1	MS20615-3M3	1	RIVET	
4	1	MS21043-08	4	NUT	8-32
3	1	NAS1149FN816P	4	WASHER	FLAT .174 - .375 X .016
2	1	MS3450KT20-27S	1	WALL MOUNT RECEPTACLE	SOCKET CONNECTORS
1	1,2	BULKHEAD	REF	REF AGUSTA AW119	
ITEM	SHT	PART NUMBER	QTY	DESCRIPTION	SPECIFICATIONS

MATERIAL LIST

CURRENT REV APPROVAL				DRAWN BY	JOHN CICHA	NOV-30-2012	TITLE:	
				CHECKED BY	DIRK ELLIS	NOV-30-2012	FIREWALL CONNECTOR KIT	
				DO NOT SCALE DRAWING				
B	UPDATE MATERIAL SPEC. NOTES (SHT 3)		JAN-07-2013	JLC	 TANIS AIRCRAFT PRODUCTS GLENWOOD MUNICIPAL AIRPORT GLENWOOD, MN 56334 USA +1.952.224.4425	SPEC: N/A		
A	INITIAL RELEASE		NOV-30-2012	JLC		SUPERCEDES: N/A		
REV	CHANGE		DATE	INIT		DRAWING: 02929		SHEET 1 OF 3

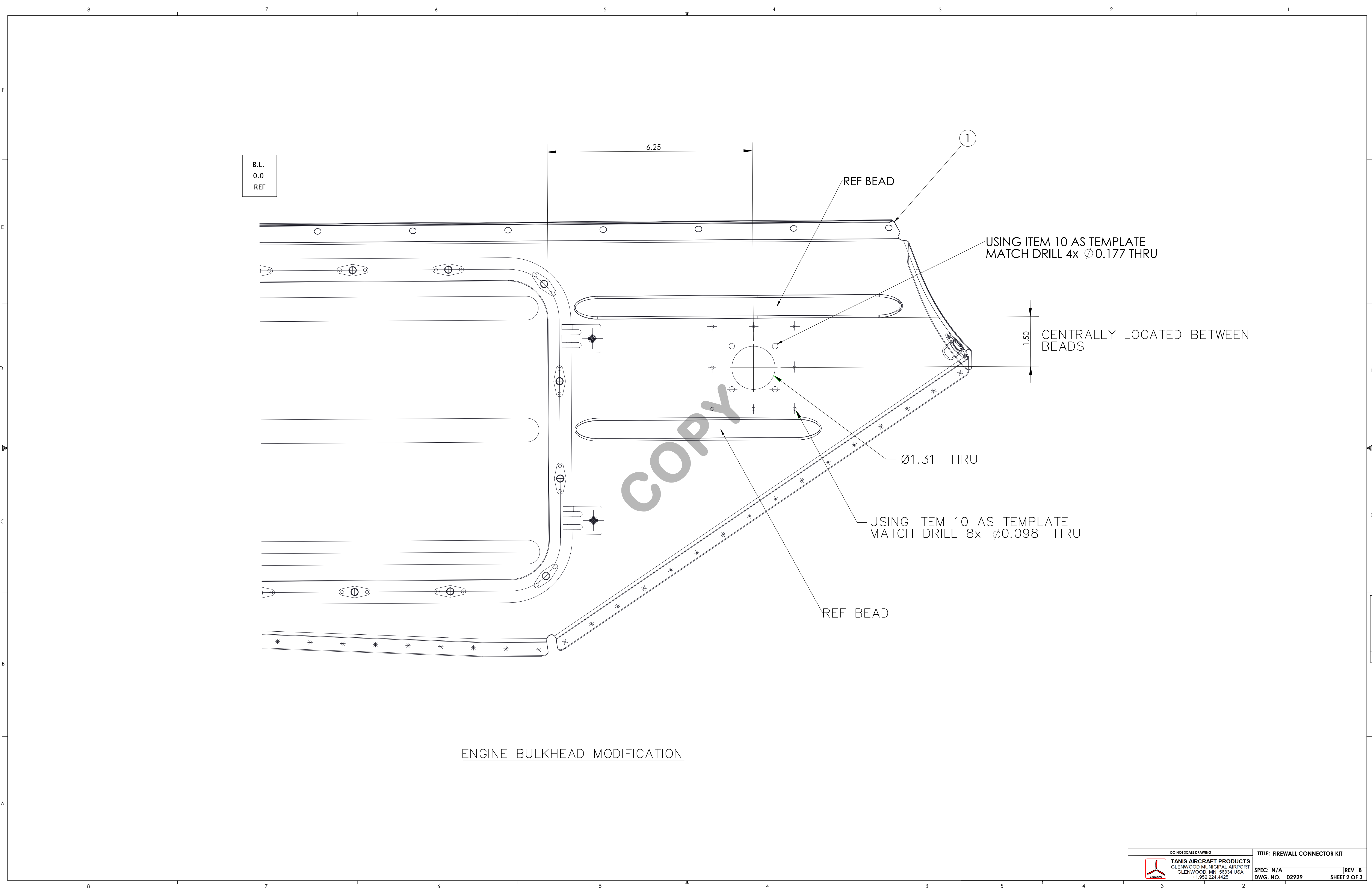


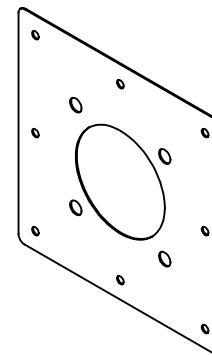
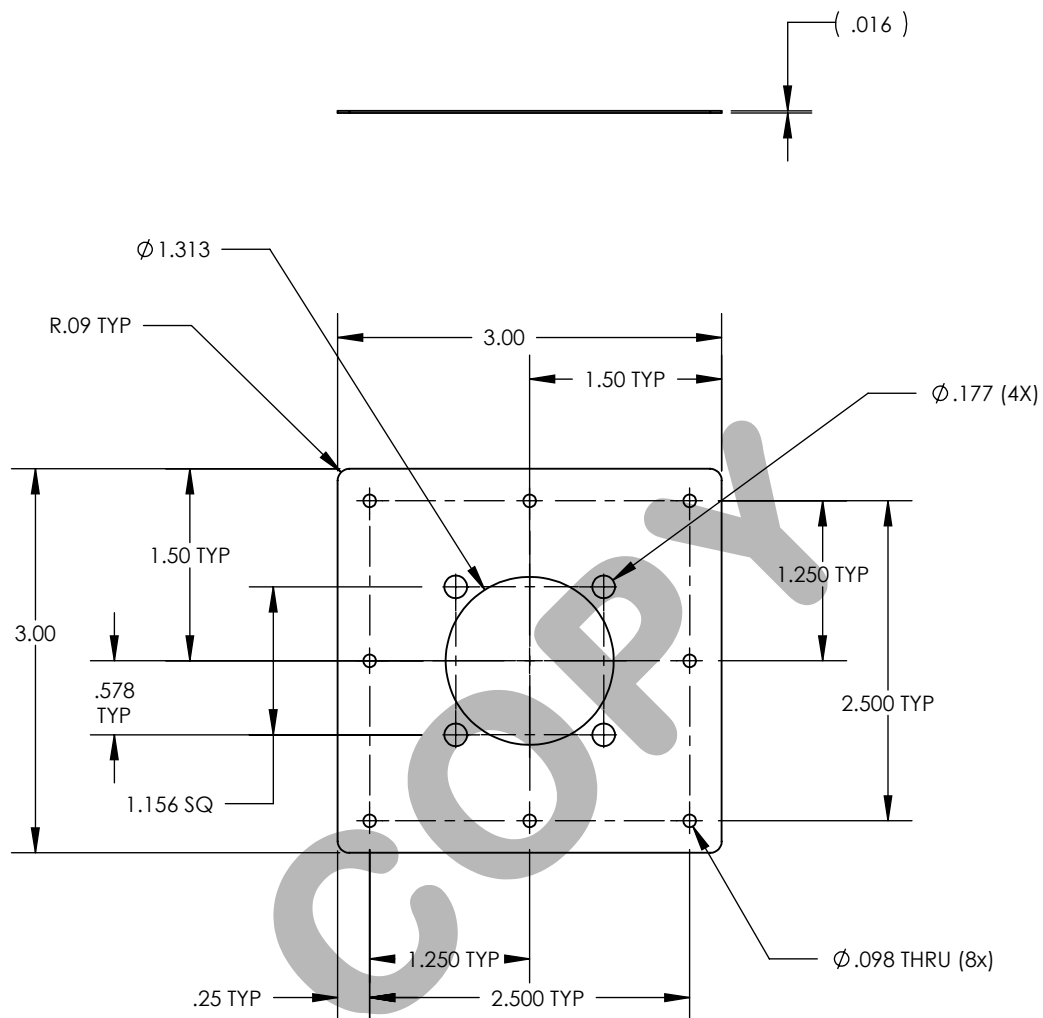
TANIS AIRCRAFT PRODUCTS
GLENWOOD MUNICIPAL AIRPORT
GLENWOOD, MN 56334 USA
+1.952.224.4425

SPEC: N/A
SUPERCEDES: N/A

DRAWING: 02929

SHEET 1 OF 3





UNLESS OTHERWISE SPECIFIED:

REMOVE BURRS & SHARP EDGES
 DIMENSIONS ARE IN INCHES
 TOLERANCES:
 ANGULAR: BEND $\pm 0.5^\circ$
 TWO PLACE DECIMAL $\pm .030$ "
 THREE PLACE DECIMAL $\pm .010$ "

PROPRIETARY AND CONFIDENTIAL

THE INFORMATION CONTAINED IN THIS
 DRAWING IS THE SOLE PROPERTY OF
 TANIS AIRCRAFT PRODUCTS. ANY
 REPRODUCTION IN PART OR AS A WHOLE
 WITHOUT THE WRITTEN PERMISSION OF
 TANIS AIRCRAFT PRODUCTS IS PROHIBITED.

**PART NUMBER 02929-1
 MOUNTING PLATE**

MATERIAL: .016 THK GRADE 304 STAINLESS STEEL
 ALT: .016 THK GRADE 2 TITANIUM SHEET PER ASTM B 265
 OR ACCEPTABLE ALTERNATE AS CALLED OUT ON PURCHASE ORDER BY ENGINEERING

DO NOT SCALE DRAWING		TITLE: FIREWALL CONNECTOR KIT	
	TANIS AIRCRAFT PRODUCTS GLENWOOD MUNICIPAL AIRPORT GLENWOOD, MN 56334 USA +1.952.224.4425	SPEC: N/A	
		REV B	
		DWG. NO. 02929	SHEET 3 OF 3