

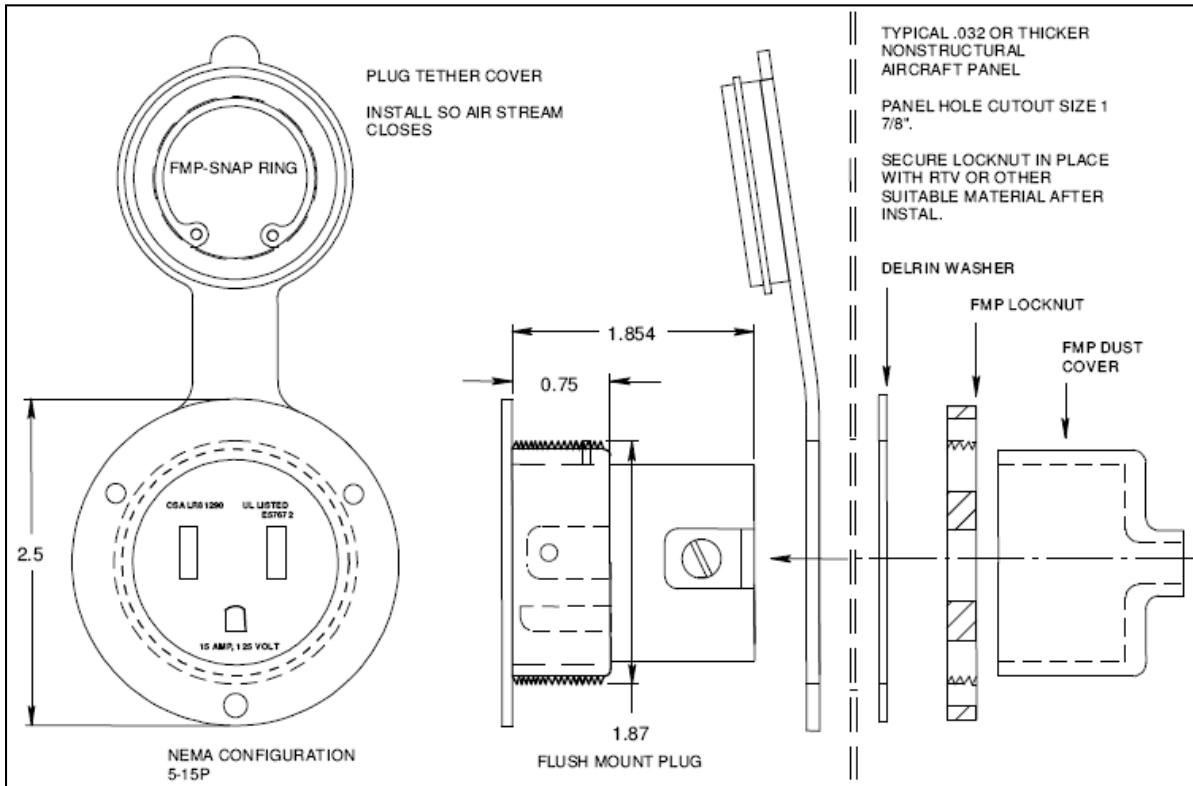


PO Box 117, 18781 County Rd 22  
Glenwood MN, 56334  
320-634-4772; 800-443-2136  
www.Tanisaircraft.com

**INSTRUCTION: TN02533**  
**Rev. 03-03-2011 DNE**  
**APPROVAL: \_\_\_\_\_**

### Installation Instruction Tanis Tethered Cap Power Plug (TP02533 and TP02829)

This plug can be mounted in a baffle (as shown below), inspection panel, or plug bracket.  
Plug can be mounted using locknut and Delrin Washer, or by the flange using appropriate hardware.  
When mounting in a structural location a skin doubler, and/or Field Approval may be required.  
Properly orient the cap in the air stream.  
The plug can be mounted with or without the tethered cap.



Power plug mounted in baffle with cap open.



Rear view of mounted power plug.